

ARDEX,

Faster and Better

亚地斯，更快更好

Company Profile

公司简介

In 1949, as a global multinational company, ARDEX was founded in Witten, Germany. For over 60 years, ARDEX has been the technology leader for the entire mortar industry, providing quality and reliable chemical building material.

Established in 2002, ARDEX (Shanghai) Co., Ltd. is a leading chemical building material manufacturer in China, its product range includes tile adhesives, waterproofing, flooring, creative surface design system, etc. ARDEX is committed to develop China market and has set up offices and branches in Shanghai, Beijing, Guangzhou and Chengdu. Meanwhile the factory which located in Pinghu, Zhejiang is also the center for R&D and training in North Asia.

1949年，亚地斯（ARDEX）成立于德国维滕市，是一家全球性的跨国公司。60多年来，亚地斯一直专注干粉砂浆行业，是整个行业中的技术领导者，提供优质且可靠的化学建材。

亚地斯于2002年进入中国市场，为国内先进的化学建材生产商，其产品包括：地坪系统、瓷砖粘结系统、防水系统、创意饰面系统等，中国总部位于上海，在北京、广州、成都分别设有办事处，坐落于浙江平湖的生产基地，同时也是北亚区的研发和培训学院中心。

60+

over 60 years
拥有60多年历史

47

47 group companies
in the world

我们在全球拥有
47个集团公司



the world's **leading**
system solution providers of
high performance specialty
building materials

世界领先的高品质特殊建
材领域的系统方案提供者

Vision 愿景

The vision of the ARDEX Group is to be one of the world's leading system solution providers of high performance specialty building materials

做世界领先的高品质特殊建材领域的系统方案提供者

Mission 理念

Excellence in all that we do

吾之所及，皆卓越

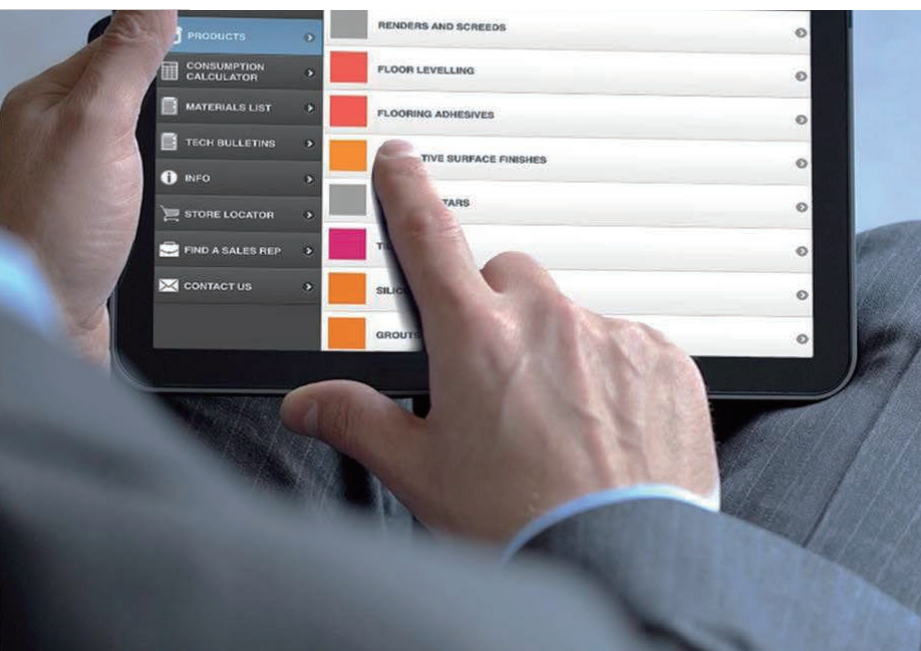
Family-owned business 家族企业

- As a family-owned company, we encourage the development of team spirit and identification with the culture of the business
- Building on the platform for growth established over many years, we look forward with confidence to a successful future
- We are highly proud of our history
- 作为家族企业，我们在鼓励团队精神发展的同时，也致力于企业文化的建设
- 基于多年来持续盈利的增长，我们更有自信迎接一个成功的未来
- 我们为亚地斯的悠久历史感到骄傲

ARDEX History 历史沿革

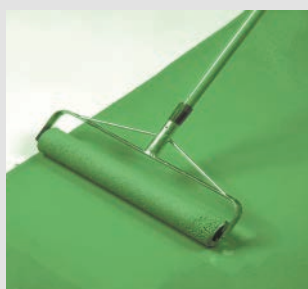


- ◆ 1949, founded in Witten, Germany
- ◆ 1953, invented self-leveling
- ◆ 1975, invented ARDURAPID
- ◆ 2002, entered to China, and developed thin bed
launched PANDOMO
- ◆ 2004, Innovation Award of Architecture and Building (DEBAU) in Germany
- ◆ 2005, awarded TOP100 Innovative Company in Germany
- ◆ 2006, invented MICROTEC
- ◆ 2007, won second consecutive "Anglian Business Award" in UK
- ◆ 2012, ARDEX acquires a majority stake in QUICSEAL Construction Chemicals in Asia
- ◆ 2013, ARDEX acquires a majority stake in CEMIX Limited in New Zealand
- ◆ 2014, ARDEX acquires a majority stake in GUTJAHR Systemtechnik in Germany
- ◆ 2015, ARDEX acquires a majority stake in WAKOL GmbH in Germany
"Ultra-Sheild" technology was launched in China
- ◆ 1949年 创立于德国维藤市
- ◆ 1953年 发明了自流平
- ◆ 1975年 发明了“ARDURAPID 快干早强”技术
- ◆ 2002年 进入中国市场，并推广“薄贴法”；
推出了“PANDOMO磐多魔”创意墙地面系统
- ◆ 2004年 荣获德国“建筑与设计”创新奖
- ◆ 2005年 荣获德国“100大创新企业”
- ◆ 2006年 发明了“MICROTEC 超微科技”技术
- ◆ 2007年 第2次荣获英国“安居尔商业奖”
- ◆ 2012年 获得亚洲QUICSEAL大部分股权
- ◆ 2013年 获得新西兰CEMIX大部分股份
- ◆ 2014年 获得德国GUTJAHR大部分股份
- ◆ 2015年 获得德国WAKOL大部分股份；
“Ultra Sheild博盾防护”技术首登中国



Product Categories

产品分类



Flooring

地坪

Cement self-leveling
Polyurethane screed
Rapidry leveling/repairing mortar
Resin flooring coating

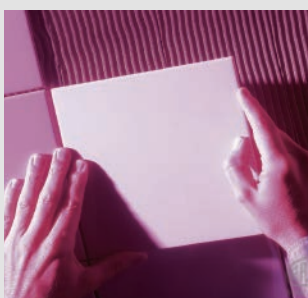
- 水泥自流平
- 聚氨酯砂浆
- 快速找平/修补
- 树脂地坪



Surface Design panDOMO®

创意装饰面材

panDOMO Wall
panDOMO Floor/Floorplus
panDOMO Loft



Tiling & Waterproofing

瓷砖粘贴及防水

Substrate preparation
Waterproofing
Tile adhesive
Tile grout

- 基层处理
- 防潮防水系统
- 石材/瓷砖粘贴系统
- 填缝系统

Innovative Technology 创新技术



ARDURAPID 快干早强

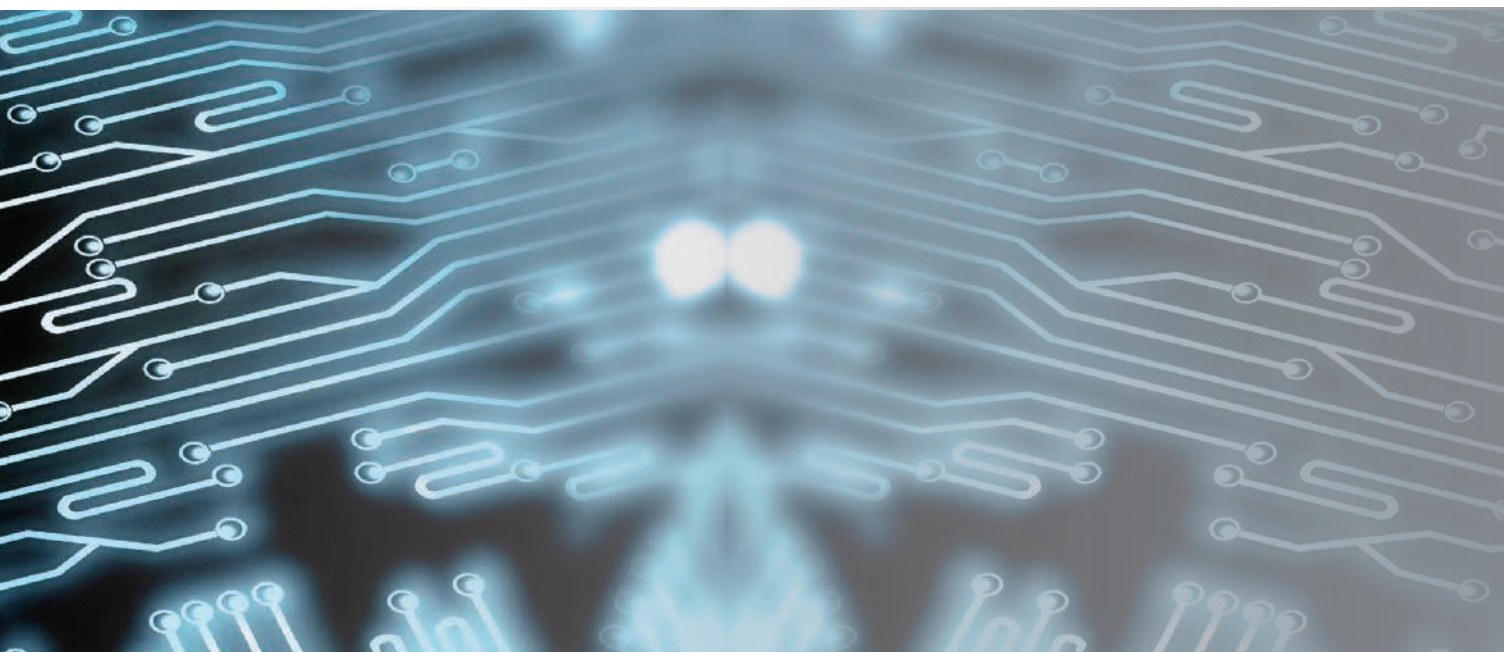
The key attribute of ARDEX ARDURAPID technology breaks through the technology bottleneck of traditional chemical building material products and makes cement hydration process quicker than usual and reduce the influences of thickness of mortar and ambient conditions.



ARDURAPID represents rapid hardening and drying, the mixture of ARDURAPID product and water is fine mortar which hardened as a result of hydration. High bonding strength, high initial strength and almost no shrinkage are some outstanding features of ARDURAPID products, they are ideal for fast track renovation and repairing work.

亚地斯“快干早强”技术突破传统化学建材的技术瓶颈，水泥水化过程不再是漫长的等待，取而代之的是“锁住”拌合水，水化反应更完整，不再局限于产品施工厚度及施工环境的影响。

“快干早强”产品硬化及干燥速度极快，与水混合搅拌后形成细柔均一浆体，通过水化反应后硬化，产品特性为粘结力强，早期强度高，几乎无收缩，“快干早强”产品特别适用于快速改造与装修的工程中。



MICROTEC 超微科技



New binding matrix and high performance fibers. With this new technology the inner strength of the CTA will be enhanced and the adhesion properties with critical tiles will be assured.

- New thin set system
- The mix of micro fibers, binder system and special dispersion powders provides a unique stabilising thinnest system.
- This means under critical conditions, like wet and freeze thaw the readings are much higher.
- Higher security for the contractor.

全新胶凝体系和高性能微纤维。MICROTEC技术可以显著增强瓷砖粘结剂内聚力，因此即使与不易粘贴的瓷砖之间都具备超强粘结力。

- 全新薄贴系统
- 通过融合了超微纤维、胶凝体系以及特殊的可再分散乳胶粉，形成了一种极其独特稳固的薄贴系统
- 这意味着在类似潮湿以及冻融循环等极其苛刻的条件下，测试结果都会比常规产品高得多
- 对承建商来说意味着更高的质量保证

ULTRA-SHIELD 博盾防护



Guaranteed substrate treatment from ARDEX

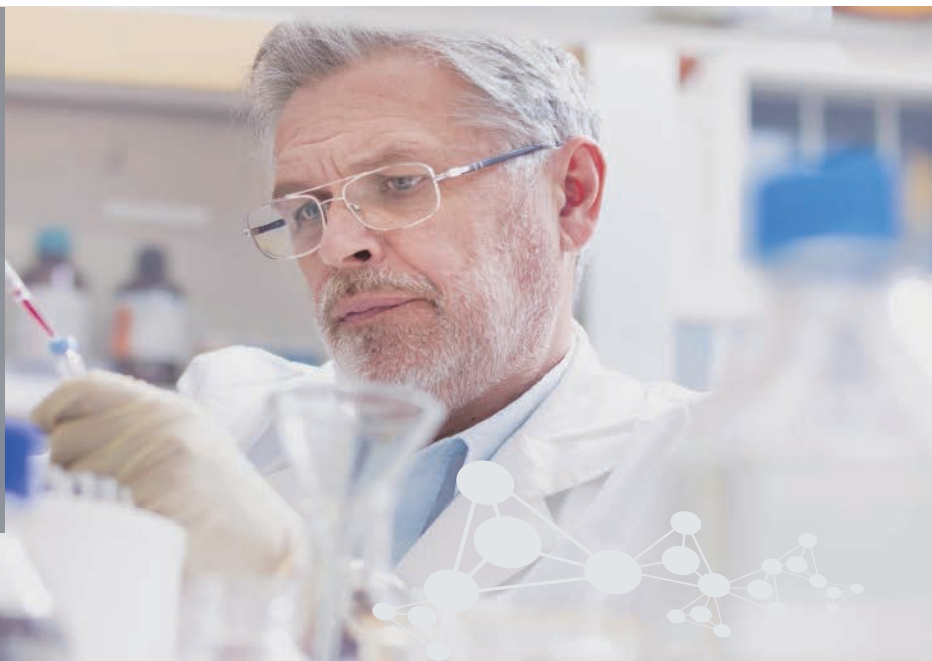
Ultra-Shield is the unique technology from ARDEX. The products embedded with Ultra-Shield technology could help the construction resist the moisture from the substrate for different conditions. There are varies of levels of Ultra-Shield products, functioning with damp-proofing, cutting off specific hazardous air, etc.

亚地斯专业基层水汽处理

Ultra-Shield博盾防护技术是ARDEX特有的技术配方。应用Ultra-Shield博盾防护技术的产品，具备多种建筑基层水汽防护的特殊功能。该系列分为不同等级，具备不同的防潮和防止有害气体的功能。

Technology Research & Development

技术研发



As a part of ARDEX Group, the company draws on numerous areas of technical and manufacturing expertise already existing in ARDEX subsidiaries around the world as you can see from the case studies earlier. This sharing of resources and technology through our global alliance enables us to provide customers with solutions to unusual problems promptly.

All new product developments undergo rigorous field trials to ensure they are of an exceptional standard. All products developed in China are also researched and tested at the Group's central laboratory in Germany. As an ongoing commitment to quality, products are tested at a specialized quality assurance laboratory at every stage of the manufacturing process to ensure that customers can rely on consistent product performance.

ARDEX has the resources and infrastructure to reliably serve every customer worldwide. Certified as a quality endorsed company in accordance with ISO 9001 by an accredited certification body, ARDEX quality assurance is built in to every stage of the manufacturing process.

作为亚地斯集团的一部分，公司利用许多技术和制造领域的专业知识，在现有的全球亚地斯分公司中不断地分享经验、资料数据，这使我们能及时为客户解决技术难题。

所有的新产品生产之前都要经过严格的现场测试，保证优越的质量标准，所有中国研发的产品还需通过德国中央实验室的再次检验。为恪守质量承诺，品控实验室会在产品生产的每个环节对产品进行检测，保证产品的性能始终如一。

亚地斯拥有足够的资源和设施为全球的每一个顾客服务。公司通过ISO9001质量体系认证。亚地斯的质量保证建立在每一个生产制造环节上。

Professional Service

专业服务

IPSS 国际项目规范服务



ARDEX IPSS (the International Projects and Specification Services) consists of representatives from ARDEX companies strategically located around the globe, assists architects with international project specifications in any part of the world and correct ARDEX products or system solutions required to ensure a successful installation regardless of location.

亚地斯IPSS团队是由亚地斯公司的代表组成，遍布世界各地，协助设计师完成全球范围内的项目规范书，提供合适的亚地斯产品和系统解决方案，以保证项目的成功。

Technical Services 技术服务

ARDEX Technical Service Department can offer very professional and effective on-site support service which based on the pre-survey, problem analysis to provide some targeted system solutions.

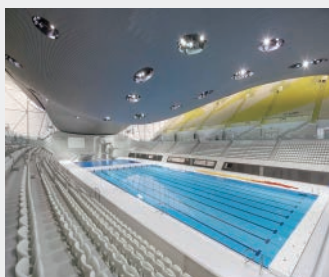
亚地斯技术服务部门具有专业且高效的项目现场支持的服务能力。通过项目现场的技术勘测，问题分析，提供非常具有针对性的系统解决方案。

Project References 工程案例



Buri Al Arab Hotel
阿拉伯七星帆船大酒店

Part of international references 部分国际工程案例



London Aquatics Center
伦敦奥运会水上运动中心



The Pentagon, Washington DC
美国五角大楼



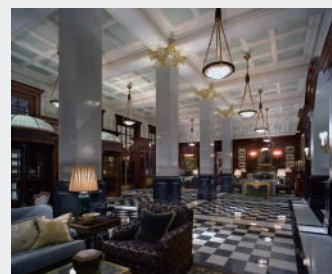
The White House
美国白宫



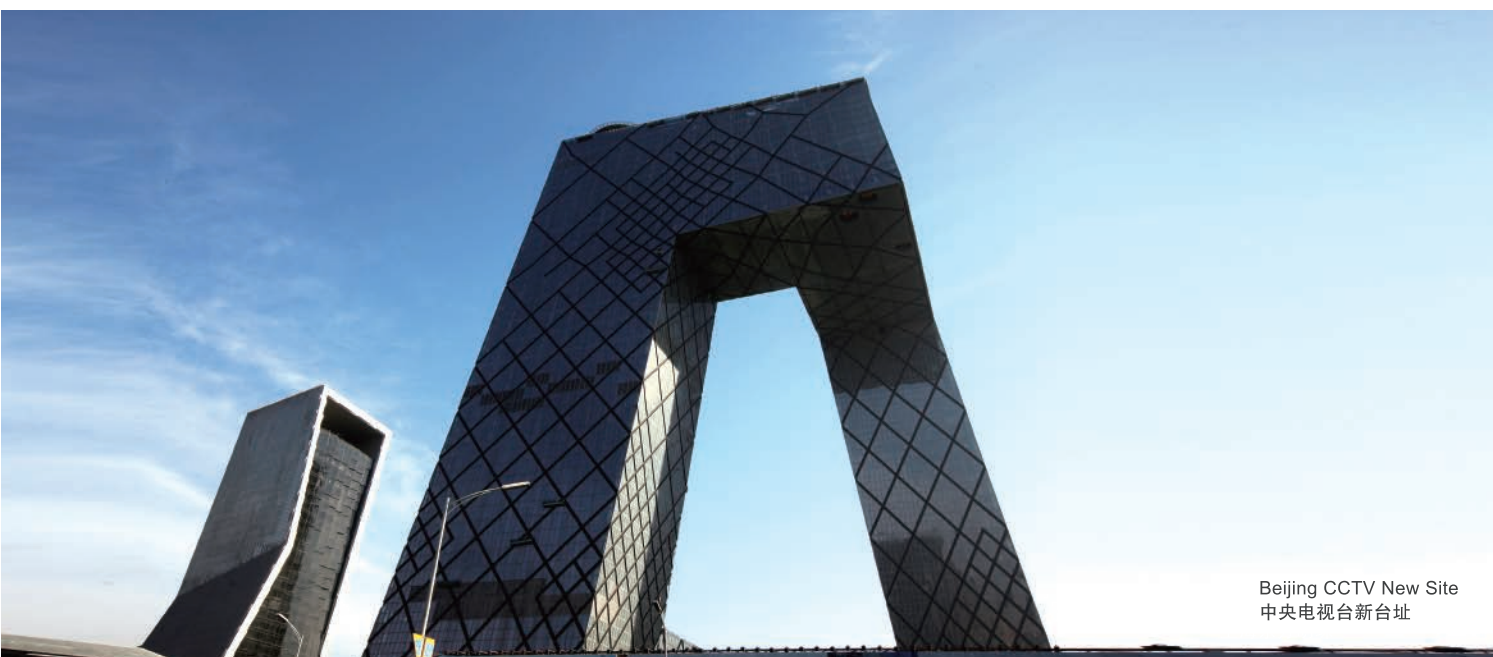
Burj Khalifa Tower
迪拜哈利法塔



London Tower Bridge
伦敦塔桥



London Savoy Hotel
伦敦萨沃伊酒店



Beijing CCTV New Site
中央电视台新台址

Part of national references 部分国内工程案例



Taiwan 101 Tower
台湾101大厦



Hong Kong SOGO
香港崇光百货



Beijing Yintai Center
北京银泰中心



Shanghai Jinmao Building
上海金茂大厦



Beijing Porsche Car Park
北京保时捷停车库



Shanghai Oriental Pearl Tower
上海东方明珠

亚地斯建材（上海）有限公司 ARDEX (SHANGHAI) CO., LTD.

上海市徐汇区桂平路481号桂中园2号楼4楼
4F, Bld 2, Guizhong Park, No. 481, Guiping Rd, Xuhui, Shanghai, PRC
电话/TEL: 021-64161800
邮件地址: info@ardexchina.com 网址: www.ardexchina.com

